

RURAL CAREER COUNSELING COORDINATORS (RC3)

LABOR MARKET INFOGRAPHICS



PERSPECTIVAS DE CARRERA EN *ATENCIÓN SANITARIA* EN EL SUDOESTE Y CENTRO SUR DE MINESOTA

**TÍTULO UNIVERSITARIO
DE 4 AÑOS O MÁS Y/O
EXPERIENCIA EQUIVALENTE**

Gerentes de servicios
médicos y sanitarios
\$ 37.57

Terapeutas físicos
\$ 38.93

**TÍTULO UNIVERSITARIO DE 1-2
AÑOS (O CREDENCIAL)**

Enfermeros diplomados
\$ 30.24

Enfermeros prácticos
autorizados y enfermeros
vocacionales autorizados
\$ 21.27

Ayudantes de enfermería
\$ 13.50

CAREER PATHS IN *HEALTH CARE*

MASTER'S DEGREE

Nurse Practitioner
\$56.52

Physician Assistant
\$56.34

**4-YEAR OR MORE COLLEGE DEGREE
AND/OR EQUIVALENT EXPERIENCE**

Medical and Clinical
Laboratory Technologist
\$27.04

Medical and Health
Services Manager
\$49.05

Mental Health
Counselor
\$23.12

ASSOCIATE'S DEGREE* OR POSTSECONDARY

In Demand Health Care Careers LICENSED PRACTICAL NURSE (LPN) REGISTERED NURSE (RN)

EDUCATION

LPNs must have a license and complete an approved educational program. Programs award a certificate diploma and typically take about 1 year to complete.

Bachelor of Science in Nursing (BSN), Associate's degree (2 years) in Nursing (ADN) or Diploma from approved Nursing program.

IMPORTANT QUALITIES

- Compassion
- Detail oriented
- Interpersonal skills
- Patience

- Critical-thinking skills
- Communication skills
- Compassion
- Detail oriented

RURAL CAREER COUNSELING COORDINATORS (RC3)

BACKGROUND

RURAL CAREER COUNSELING COORDINATORS (RC3)

- **NORTHEAST MN OFFICE OF JOBS & TRAINING**
- **RURAL MINNESOTA CONCENTRATED EMPLOYMENT PROGRAMS**
- **SOUTHWEST MINNESOTA PRIVATE INDUSTRY COUNCIL**
- **SOUTH CENTRAL WORKFORCE COUNCIL**
- **CAREER SOLUTIONS**
- **CENTRAL MINNESOTA JOBS & TRAINING**
- **WORKFORCE DEVELOPMENT INC.**

RURAL CAREER COUNSELING COORDINATORS (RC3)

CONCEPT TO CONCEPTION

RURAL CAREER COUNSELING COORDINATORS (RC3)

- **ASSET GAP ANALYSIS**
- **CRITICAL NEED/DEMAND FOR LABOR MARKET INFORMATION**
- **EASY TO READ *AND* UNDERSTAND**
- **QUICKLY BECAME A COLLABORATIVE EFFORT ACROSS RC3'S**
- **COMPARISONS & PATHWAYS**
- **IN DEMAND CAREERS**

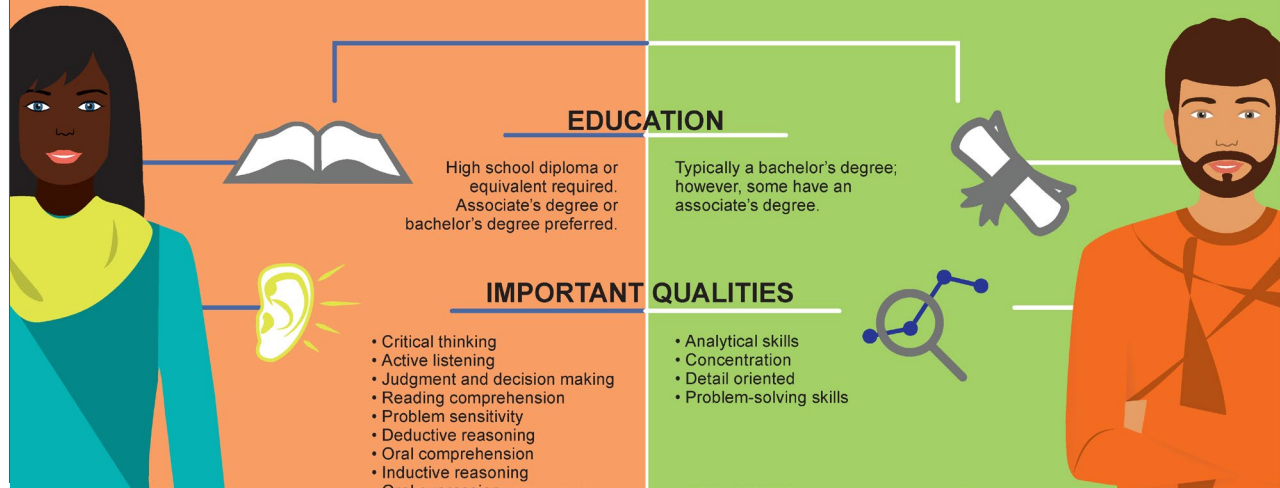
RURAL CAREER COUNSELING COORDINATORS (RC3)

LABOR MARKET INFOGRAPHICS

In Demand Technology Careers

COMPUTER NETWORK SUPPORT SPECIALIST

COMPUTER PROGRAMMERS



CAREER PATHS IN INFORMATION TECHNOLOGY IN SW/SC MN

4-YEAR OR MORE COLLEGE DEGREE AND/OR EQUIVALENT EXPERIENCE

Computer & Information Systems Managers \$48.60	Computer Systems Analysts \$36.08
Computer Programmers \$27.92	Network & Computer Systems Administrators \$32.97

1-2 YEAR COLLEGE DEGREE (OR CREDENTIAL)

Computer Network Support Specialists \$25.06	Computer User Support Specialists \$20.56
--	---

RURAL CAREER COUNSELING COORDINATORS (RC3)

- LOCAL & STATE DATA
- AVAILABLE IN SPANISH
- PATHWAYS
- COMPARISONS (PEOPLE)
- PROFILES
- ALL DATA IS BASED ON INDEMAND INDUSTRIES AND OCCUPATIONS; COLLABORATIVE EFFORT WITH DEED DATA ANALYSTS

CAREER PATHS IN HEALTH CARE

MASTER'S DEGREE

Nurse Practitioner \$56.52 Physician Assistant \$56.34

4-YEAR OR MORE COLLEGE DEGREE AND/OR EQUIVALENT EXPERIENCE

Medical and Clinical Laboratory Technologist \$27.04 Medical and Health Services Manager \$49.05 Mental Health Counselor \$23.12

ASSOCIATE'S DEGREE* OR POSTSECONDARY NON-DEGREE AWARD**

Radiologic Technologist* \$32.60 Surgical Technologist* \$28.63 Medical Assistant** \$19.79
 Registered Nurse* \$38.12 Licensed Practical and Licensed Vocational Nurse** \$22.93 Nursing Assistant** \$16.54

HIGH SCHOOL DIPLOMA OR GED / ON-THE-JOB TRAINING

Optician, Dispensing \$18.54 Pharmacy Technician \$18.00

These jobs are in demand in the state of Minnesota and these are Minnesota median wages. Data collected from Department of Employment and Economic Development.

WHY CHOOSE A CAREER IN HEALTH CARE?

According to DEED's 2014-2024 Employment Outlook data, Southeast Minnesota is projected to see an additional 3,076 new openings for healthcare practitioners and technical occupations, an increase of 13.3 percent, while an additional 1,618 openings in healthcare support are projected, a 14.6 percent increase. In all, projected openings in healthcare make up almost 40 percent of the total job openings projected for this time period. Because of this healthy projected growth, there are many health care-related occupations that currently exist, and will see a future need, at every education level and are also in high demand according to DEED's Occupations in Demand.

A proud partner of the **americanjobcenter** network.

CareerForce
It's your state of success

Provided for you by the Minnesota Rural Career Counseling Coordinators (RCCS) team

View additional information regarding career paths in health care:
<https://www.careeronestop.org/site-search.aspx?keyword=healthcare>

April 2020

Central Minnesota Jobs and Training Services, Inc. and Career Solutions are Equal Opportunity Employer and Program Providers. Upon request the information in this document can be made available in alternative formats. Contact Angie Dahle at angie.dahle@CSJobs.org or Leslie Wojtowicz at lwojowicz@cmjts.org or at 1-800-284-7425

CAREER PATHS IN HEALTH CARE

MASTER'S DEGREE

NURSE PRACTITIONER \$56.52 Diagnose and treat acute, episodic or chronic illness, independently or as part of a healthcare team. May focus on health promotion and disease prevention. May order, perform or interpret diagnostic tests such as lab work and X rays. May prescribe medication. Must be registered nurses who have specialized graduate education.

PHYSICIAN ASSISTANT \$56.34 Provide healthcare services typically performed by a physician, under the supervision of a physician. Conduct complete physicals, provide treatment, and counsel patients. May, in some cases, prescribe medication. Must graduate from an accredited educational program for physician assistants.

4-YEAR OR MORE COLLEGE DEGREE AND/OR EQUIVALENT EXPERIENCE

MEDICAL AND CLINICAL LABORATORY TECHNOLOGIST \$27.04 Perform complex medical laboratory tests for diagnosis, treatment, and prevention of disease. May train or supervise staff.

MEDICAL AND HEALTH SERVICES MANAGER \$49.05 Plan, direct or coordinate medical and health services in hospitals, clinics, managed care organizations, public health agencies or similar organizations.

MENTAL HEALTH COUNSELOR \$23.12 Counsel with emphasis on prevention. Work with individuals and groups to promote optimum mental and emotional health. May help individuals deal with issues associated with addictions and substance abuse, family, parenting, and marital problems, stress management, self-esteem; and aging.

ASSOCIATE'S DEGREE* OR POSTSECONDARY NON-DEGREE AWARD**

RADIOLOGIC TECHNOLOGIST* \$32.60 Take X rays and CAT scans or administer nonradioactive materials into patient's blood stream for diagnostic purposes. Includes technologists who specialize in other scanning modalities.

REGISTERED NURSE* \$38.12 Assess patient health problems and needs, develop and implement nursing care plans, and maintain medical records. Administer nursing care to ill, injured, convalescent or disabled patients. May advise patients on health maintenance and disease prevention or provide case management. Licensing or registration required.

SURGICAL TECHNOLOGIST* \$28.63 Assist in operations, under the supervision of surgeons, registered nurses or other surgical personnel. May help set up operating room, prepare and transport patients for surgery, adjust lights and equipment, pass instruments and other supplies to surgeons and surgeon's assistants, hold retractors, cut sutures, and help count sponges, needles, supplies, and instruments.

LICENSED PRACTICAL AND LICENSED VOCATIONAL NURSE \$22.93** Care for ill, injured or convalescing patients or persons with disabilities in hospitals, nursing homes, clinics, private homes, group homes, and similar institutions. May work under the supervision of a registered nurse. Licensing required.

MEDICAL ASSISTANT \$19.79** Perform administrative and certain clinical duties, under the direction of a physician. Schedule appointments, maintain medical records, bill and code information for insurance purposes as well as take and record vital signs and medical histories, prepare patients for an exam, draw blood, and administer medications as directed by physician.

NURSING ASSISTANT \$16.54** Provide basic patient care under direction of nursing staff. Feed, bathe, dress, groom or move patients or change linens. May transfer or transport patients. Includes nursing care attendants, nursing aides, and nursing attendants.

HIGH SCHOOL DIPLOMA OR GED / ON-THE-JOB TRAINING

OPTICIANS, DISPENSING \$18.54 Design, measure, fit, and adapt lenses and frames for client according to written optical prescription or specification. Assist client with inserting, removing, and caring for contact lenses as well as selecting frames. Measure customer for size of eyeglasses and coordinate frames with facial eye measurements and optical prescription. Prepare work order for optical laboratory containing instructions for grinding and mounting lenses in frames. Verify exactness of finished lens spectacles. Adjust frame and lens position to fit client. May shape or reshape frames.

PHARMACY TECHNICIAN \$18.00 Prepare medications under the direction of a pharmacist. May measure, mix, count out, label, and record amounts and dosages of medications according to prescription orders.

In Demand Manufacturing Careers

MECHANICAL ENGINEERING TECHS

INDUSTRIAL ENGINEERS

EDUCATION

Most employers prefer to hire candidates with associate's degrees or other postsecondary training in mechanical engineering technology.

Industrial Engineers typically need a bachelor's degree in mechanical engineering or mechanical engineering technology.

IMPORTANT QUALITIES

- Project Management
- Work independently
- Manufacturing process
- Problem solving
- Troubleshooting
- Process Improvement
- Risk Management
- Detail oriented
- Creativity

- Project Management
- Problem solving
- Data Analysis
- Product development
- Work independently
- Management skills

WHAT THEY DO

Mechanical engineering technicians help mechanical engineers design, develop, test, and manufacture mechanical devices, including tools, engines, and machines. They may make sketches and rough layouts, record and analyze data, make calculations and estimates, and report their findings.

Develops and documents the required parameters for machines and tools used to produce products. Analyze problems to see how mechanical and thermal devices might help solve a particular problem. Investigate equipment failures or difficulties to diagnose faulty operation and to recommend remedies. Analyze the test results and change the design or system as needed. Oversee the manufacturing process for the device.

EMPLOYMENT OPPORTUNITIES

MEDIAN HOURLY WAGES \$20.86 TO \$27.37⁽¹⁾

Employment of industrial machinery mechanics and machinery maintenance workers is projected to grow 7 percent from 2016 to 2026.

MEDIAN HOURLY WAGES \$29.75 TO \$43.13⁽²⁾

Employment of industrial engineers is projected to grow 9 percent from 2016 to 2026.

These jobs are in demand in Southwest and South Central Minnesota and these are SW/SC Minnesota Median wages. Data collected from Department of Employment and Economic Development.

WORK ENVIRONMENT

Mechanical engineering technicians assist with manufacturing processes in factories or with development phases in research and development labs before manufacturing takes place.

Industrial Engineers generally work in offices. They may occasionally visit worksites where a problem or piece of equipment needs their personal attention.



January 2019

Equal Opportunity Employer and Program Provider - Upon request the information in this document can be made available in alternative formats for people with disabilities by contacting Leah Hastad at hastad@swmpnc.org or 507-760-0199

In Demand Manufacturing Careers

CNC PROGRAMMER AND MACHINIST

WELDERS

EDUCATION

Some operators are trained on basic machine operations and functions in a few months. Other workers, such as computer-controlled machine tool operators, may need up to two years to become trained.

High school diploma or equivalent, combined with technical training and on the job training, welding certificate

IMPORTANT QUALITIES

- High degree of autonomy
- Troubleshooting
- Integrity
- Industrial automation
- Process management
- Data entry

- Detail oriented
- Self-starting / Self-motivated
- Problem solving
- Integrity
- Dependability
- Team player
- Work independently
- Basic computer skills

WHAT THEY DO

Operate programming software to generate computer numerically controlled (CNC) programs used to control CNC machine tools that drill, mill, rout, grind, or notch.

Responsible for assembling structural metal products using tools, welding equipment, and their own hands.

EMPLOYMENT OPPORTUNITIES

MEDIAN HOURLY WAGES \$24.55 TO \$33.88⁽¹⁾

Demand is expected to be strong, as many firms are adopting technologies such as machine tools and robots.

These jobs are in demand in Southwest and South Central Minnesota and these are SW/SC Minnesota Median wages. Data collected from Department of Employment and Economic Development.

MEDIAN HOURLY WAGES \$16.59 TO \$22.61⁽²⁾

Types of welders in demand: arc and gas welding

WORK ENVIRONMENT

These workers often operate powerful, high-speed machines. Operators usually wear protective equipment, such as safety glasses, earplugs, and steel-toed boots to protect them from flying particles of metal or plastic, machine noise, and heavy objects.

Welders and cutters may work outdoors, or indoors, sometimes in a confined area designed to contain sparks and glare. Most welders work full time, and overtime is common.



January 2019

Equal Opportunity Employer and Program Provider - Upon request the information in this document can be made available in alternative formats for people with disabilities by contacting Leah Hastad at hastad@swmpnc.org or 507-760-0199

CAREER PATHS IN CONSTRUCTION

4-YEAR OR MORE COLLEGE DEGREE AND/OR EQUIVALENT EXPERIENCE



Architectural & Engineering Manager
\$67.49

Civil Engineer
\$43.41

Construction Manager
\$44.57

1-2 YEAR COLLEGE DEGREE OR APPRENTICESHIP

Carpenter
\$24.66
Electrician
\$34.85

Heating, Air Conditioning, & Refrigeration Mechanic & Installer
\$25.02

Plumber, Pipefitter, & Steamfitter
\$35.86

HIGH SCHOOL DIPLOMA OR GED / ON-THE-JOB TRAINING

Construction Worker Super
Cement Mason/
Concrete Finisher
\$24.58

Construction Equipment Operator
Highway Maintenance Worker
\$24.74

Construction Laborer
\$24.05
Painter, Construction, & Maintenance
\$23.94

These jobs are in demand in Minnesota and these are Minnesota median wages. Data collected from Department of Employment and Economic Development.

WHY CHOOSE A CAREER IN CONSTRUCTION?

- Steady, booming industry
- Fulfilling career choice
- Abundant opportunities
- Feel a sense of accomplishment
- Make an impact on your community
- Stay in shape
- Earn a great income

A proud partner of the
americanjobcenter
network

CareerForce
It's your state of success

Provided for you by the Minnesota Rural Career Counseling Coordinators (R3C3 Grant)

View videos of construction workers in these occupations:

www.careeronestop.org/Videos/CareerVideos/career-videos.aspx

Central Minnesota Jobs and Training Services, Inc. and Career Solutions are Equal Opportunity Employer and Program Providers. Upon request the information in this document can be made available in alternative formats. Contact Angie Dahle at angie.dahle@CS-Jobs.org or Leslie Wojtowicz at lwojto@csjts.org or at 1-800-284-7425

April 2020

Carreras de gran demanda en la construcción MECÁNICOS E INSTALADORES DE CALEFACCIÓN, AIRE ACONDICIONADO Y REFRIGERACIÓN CARPINTEROS

EDUCACIÓN

Se puede ingresar a esta ocupación a través un título de nivel postsecundario en un campo relacionado con calefacción, ventilación, aire acondicionado y refrigeración.

Se requiere un diploma de escuela secundaria o equivalente. Se prefiere un título de nivel postsecundario (1 - 2 años). El Consejo regional de carpinteros de los estados del centro-norte ofrece oportunidades de aprendizaje que permiten a los individuos comenzar como aprendices y progresar hasta el nivel de oficiales.

CUALIDADES IMPORTANTES

- Aptitudes mecánicas
- Destreza manual
- Aptitudes de servicio al cliente
- Resolución de problemas
- Flexibilidad física
- Lectura de planos

- Aptitudes matemáticas
- Aptitudes de pensamiento crítico
- Aptitudes de comunicación
- Capacidad de toma de decisiones
- Aptitudes mecánicas
- Aptitudes de servicio al cliente
- Lectura de planos

QUÉ HACEN

Instalan, prestan servicio o reparan sistemas de calefacción, aire acondicionado central o refrigeración en entornos residenciales o comerciales.

Construyen, erigen, instalan o reparan estructuras y dispositivos hechos de madera, escaleras de madera, marcos de ventanas y de puertas, y pisos de madera dura. También pueden instalar muebles, entablados, paneles de yeso y aislamiento de bloques de fibra o en rollo. Se incluyen los constructores de tabiques, que construyen puertas o tabiques en galerías subterráneas.

OPORTUNIDADES DE EMPLEO

MEDIOS SALARIOS POR HORA
\$19.63
\$32.57^A

Se prevé que el empleo de los mecánicos e instaladores de calefacción, aire acondicionado y refrigeración crezca un 10.0 % entre 2016 y 2026, casi tan rápido como el promedio de todas las ocupaciones.

Estos trabajos tienen gran demanda en el suroeste y centro sur de Minnesota. Se indican los salarios promedio de estas zonas. Datos obtenidos del Departamento de Empleo y Desarrollo Económico.

MEDIOS SALARIOS POR HORA
\$16.85
\$26.40^A

Se prevé que el empleo de los carpinteros crezca un 6 % entre 2016 y 2026, casi tan rápido como el promedio de todas las ocupaciones.

ENTORNO LABORAL

Trabajan en una amplia variedad de entornos, como viviendas y empresas comerciales. También pueden trabajar en plantas nucleares, instalaciones militares, plantas de manufactura y químicas, centros comerciales minoristas, hospitales y edificios educacionales.

Los carpinteros trabajan en espacios interiores y exteriores en proyectos diversos como entramados de madera o metálicos, encofrados de concreto, acabados interiores y exteriores para construcciones nuevas y remodelación de viviendas, edificios de departamentos, edificios industriales, oficinas, hospitales, escuelas, centros comerciales, estadios, carreteras y puentes. La carpintería es físicamente exigente.

La mayoría trabaja a tiempo completo. Es común trabajar horas extras.

A proud partner of the
americanjobcenter
network

SOUTHWEST MINNESOTA
PRIVATE INDUSTRY COUNCIL

SOUTH CENTRAL
WORKFORCE COUNCIL
CareerForce
It's your state of success

Emplesador y proveedor de programas que ofrece igualdad de oportunidades. A pedido, la información de este documento puede suministrarse en formatos alternativos para personas con discapacidades. Contacte con Leah Hastad en hastad@swmipc.org o 507-760-0199.

Agosto de 2019

PERSPECTIVAS DE CARRERA EN TRANSPORTE

EN EL SUDOESTE Y CENTRO SUR DE MINESOTA

TÍTULO UNIVERSITARIO DE 4 AÑOS O MÁS Y/O EXPERIENCIA EQUIVALENTE

Gerente de transporte, almacenamiento y distribución \$ 37.04
Especialista en logística \$ 33.13

TÍTULO UNIVERSITARIO DE 1-2 AÑOS (O CREDENCIAL)

Especialista en motores diésel \$ 19.74
Técnico de servicio automotriz \$ 18.79

DIPLOMA DE ESCUELA SECUNDARIA O GED / CAPACITACIÓN EN EL TRABAJO

Trabajador de mantenimiento de carreteras \$ 22.06
Obreros y acarreadores de carga, mercaderías y materiales \$ 16.28
Despachador \$ 17.37
Conductor de autobús escolar \$ 15.44
Conductor de camiones pesados y tractor-remolque \$ 19.98

¿POR QUÉ ELEGIR UNA CARRERA EN TRANSPORTE?

El transporte es un sector esencial. El sector del transporte y la logística es uno de los que no puede reemplazar la tecnología y, de hecho, puede incluso enriquecerlo: todas las formas de tecnología deben producirse y transportarse. Y usted puede ser la persona que esté detrás de eso. Existen abundantes oportunidades. ¡Obtenga grandes ingresos!

Estos trabajos tienen gran demanda en el sudoeste y centro sur de Minnesota. Se indican los salarios promedio de estas zonas. Datos obtenidos del Departamento de Empleo y Desarrollo Económico (DEED).

A proud partner of the
americanjobcenter
network

by member agency
PRIVATE INDUSTRY COUNCIL

SOUTH CENTRAL WORKFORCE
COUNCIL

CareerForce
It's your state of success

Vea videos sobre perspectivas de carrera en transporte:
www.careeronestop.org/Videos/CareerVideos/career-videos.aspx

Empleador y proveedor de programas que ofrece igualdad de oportunidades. A pedido, la información de este documento puede suministrarse en formatos alternativos para personas con discapacidades. Contacte con Leah Hastad at lhastad@swmnpic.org o 507-760-0199.

Enero de 2019

In Demand Transportation Careers HEAVY & TRACTOR-TRAILER TRUCK DRIVERS AUTOMOTIVE SERVICE TECHNICIAN

EDUCATION

Usually a high school diploma and attend a professional truck driving school. They must have a commercial driver's license (CDL).

High school diploma or equivalent. Typically need to complete a vocational or other postsecondary education program (1-2 years) in automotive service technology.

IMPORTANT QUALITIES

- Near and far vision
- Hand-eye-foot coordination
- Quick reaction time
- Depth perception
- Problem solving skills

- Customer-service skills
- Detail oriented
- Dexterity
- Mechanical skills
- Organizational skills
- Physical strength
- Troubleshooting skills

WHAT THEY DO

Most tractor-trailer drivers are long haul drivers. There are opportunities for Heavy Tractor-Trailer Truck Drivers in road construction, you local and state highway departments, excavating, quarries, and agriculture.

Inspect, maintain, and repair cars and light trucks. They use computers and scanning tools frequently to test parts and systems to identify problems, perform basic maintenance, including oil changes and tire rotations, and repair or replace worn parts. Explains automotive problems and repairs to clients.

EMPLOYMENT OPPORTUNITIES

MEDIAN HOURLY WAGES \$16.72 TO \$23.35
Employment of heavy and tractor-trailer truck drivers is projected to grow 6 percent from 2016 to 2026, about as fast as the average for all occupations. As the demand for goods increases, more truck drivers will be needed to keep supply chains moving.

MEDIAN HOURLY WAGES \$15.40 TO \$23.81
Employment of automotive service technicians and mechanic is projected to grow 6 percent from 2016 to 2026, about as fast as the average for all occupations. More entry-level automotive service technicians will be needed to perform basic maintenance and repairs as the number of vehicles in use continues to rise.

These jobs are in demand in Southwest and South Central Minnesota and these are SWSC Minnesota Median wages. Data collected from Department of Employment and Economic Development.

WORK ENVIRONMENT

Working as a long-haul truck driver is a major lifestyle choice because these drivers can be away from home for days or weeks at a time. Heavy & Tractor-Trailer Truck Drivers are typically in an enclosed vehicle or equipment. Drivers can also work outdoors and be exposed to weather conditions.

Most service technicians work full time, and many work evenings or weekends. Overtime is common.

A proud partner of the
americanjobcenter
network

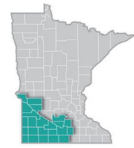
by member agency
SOUTHWEST MINNESOTA PRIVATE INDUSTRY COUNCIL

SOUTH CENTRAL WORKFORCE
COUNCIL

CareerForce
It's your state of success

January 2019

Equal Opportunity Employer and Program Provider - Upon request the information in this document can be made available in alternative formats for people with disabilities by contacting Leah Hastad at lhastad@swmnpic.org or 507-760-0199



BUSINESS CAREERS

IN SOUTHWEST & SOUTH CENTRAL MINNESOTA

CAREER PATHS IN BUSINESS SERVICES IN SW/SC MN

1-2 YEAR COLLEGE DEGREE

- Bookkeeping, Accounting & Auditing Clerk: \$17.45
- Business Operations Specialist: \$17.82
- Loan Officer: \$24.69
- Sales Representative: \$26.33
- Human Resources Specialist: \$17.82

4-YEAR OR MORE COLLEGE DEGREE AND/OR EQUIVALENT EXPERIENCE

- Accountant & Auditor: \$26.74
- Financial Manager: \$48.10
- Financial Advisor: \$27.55
- Training & Development Specialist: \$26.62
- Human Resources Manager: \$46.51
- Marketing Manager: \$46.42
- Sales Manager: \$42.91
- General & Operations Manager: \$33.84

HIGH SCHOOL DIPLOMA OR GED / ON-THE-JOB-TRAINING

- Customer Service Representative: \$16.14
- General Office Clerk: \$16.70
- Receptionist & Information Clerk: \$13.29
- Secretary & Administrative Assistant: \$17.95

WHY CHOOSE A CAREER IN BUSINESS?

- It is a growth industry.
- It is easier to switch to a different job in the career.
- Business careers can offer more opportunities for advancement.
- Earn a great income.
- Opportunities exist in all industries.

These jobs are in demand in Southwest and South Central Minnesota and there are 51,930 Minnesota Median wages. Data collected from Department of Employment and Economic Development.

View additional information regarding career paths in business services: <http://www.unemployment.org>

CAREER PATHS IN BUSINESS SERVICES

4-YEAR OR MORE COLLEGE DEGREE AND/OR EQUIVALENT EXPERIENCE

- Financial Manager: \$48.10 Plan, direct, coordinate, accounting, inventory, banking, insurance, securities, and other financial activities of a branch, office, or department of an organization.
- Accountant & Auditor: \$26.74 Coordinate, manage, and the collection of assets to ensure financial records, give advice, or audit and ensure statements prepared by others.
- Financial Advisor: \$27.55 Advise clients on financial plans using knowledge of tax and investment strategies, insurance, pension, annuity plans, and real estate. Guide clients regarding credit, stocks, bonds, and how financial strategies, tax status, and financial objectives.
- Training & Development Specialist: \$26.62 Design and conduct training and development programs to improve individual and organizational performance.

1-2 YEAR COLLEGE DEGREE

- Bookkeeping, Accounting, and Auditing Clerk: \$17.45 Compute, classify, and record financial data to base financial records company.
- Loan Officer: \$24.68 Evaluate, authorize, or recommend loans of commercial, real estate, or credit loans. Advise borrowers on financial status and optimal methods.
- Business Operations Specialist: \$17.82 Plan, direct, or coordinate the operations of operations.

HIGH SCHOOL DIPLOMA OR GED / ON-THE-JOB-TRAINING

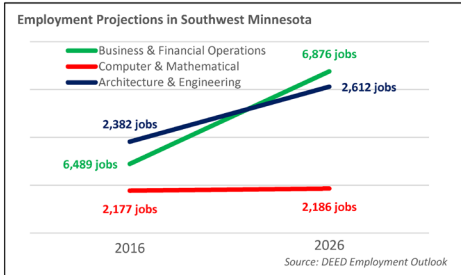
- Customer Service Representative: \$16.14 Receive and answer customer's queries and provide information in response to inquiries about products and services and to handle and receive customer's complaints.
- General Office Clerk: \$16.70 Answer telephones, bookkeeping, typing, data entry, office machine, and clerical.
- Receptionist & Information Clerk: \$13.29 Provide information to the general public, customers, and visitors.
- Secretary & Administrative Assistant: \$17.95 Perform routine clerical and administrative functions such as typing correspondence, preparing reports, operating and maintaining report and electronic files, or providing information to callers.

Women In Business

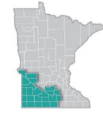
Though typically viewed as a male-dominated industry, almost 50% of jobs in Professional and Business Services were held by females in 2019.



In sum, business careers are expected to grow nearly +6% over the next 10 years, adding more than **600 new jobs**. In addition, there will be more than **3,000 replacement openings** as current workers retire or change jobs for other reasons.



Equal Opportunity Employer and Program Provider - Upon request the information in this document can be made available in alternative formats for people with disabilities by contacting Leah Hastad at lhastad@swmnpic.org or 507-760-0199



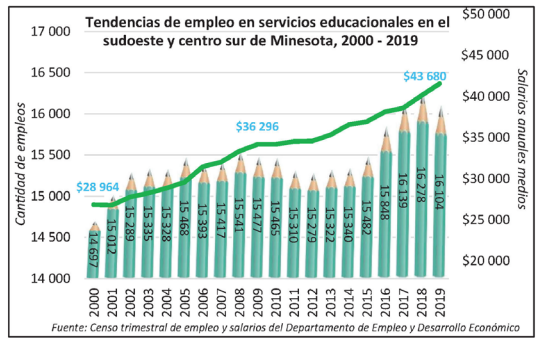
CARRERAS EN EDUCACIÓN

EN EL SUDOESTE Y CENTRO SUR DE MINNESOTA

El de servicios educacionales es el sector de mayor empleo en el sudoeste y centro sur de Minnesota, ya que proporciona más de **16 000 empleos**.

También fue uno de los de mayor crecimiento, ya que agregó más de **1400 empleos desde 2000 (un salto mayor del 10%)**. Los salarios en educación están encima del promedio; se han incrementado más de **20%** en los últimos 10 años.

La educación, que representa 1 de cada 11 empleos, es uno de los sectores de mayor crecimiento y movilidad, que ofrece empleos en casi todas las comunidades de la región. Y lo que es más importante: los educadores **producen un cambio duradero en la vida de las personas**.



CARRERAS EN EDUCACIÓN

(CON SALARIOS MEDIOS EN EL SUDOESTE DE MINNESOTA)



Empleado y proveedor de programas que ofrece igualdad de oportunidades. A pedido, la información de este documento puede suministrarse en formatos alternativos para personas con discapacidades. Contacte con Leah Hastad en lhastad@swmnpic.org o 507-760-0199.



RURAL CAREER COUNSELING COORDINATORS (RC3)

LABOR MARKET INFOGRAPHICS

CAREER PATHS IN AGRICULTURE AND FOOD INDUSTRY

1-2 YEAR COLLEGE DEGREE (OR CREDENTIAL)

Diesel Engine Specialists \$24.85	Agricultural Inspectors \$22.41
Farm Equipment Mechanics and Service Technicians \$21.62	Heavy & Tractor Trailer Truck Drivers \$23.42

4-YEAR OR MORE COLLEGE DEGREE AND/OR EQUIVALENT EXPERIENCE

Agricultural and Food Science Technicians \$20.04	Veterinarians \$44.39
	Biological Technicians \$23.79

IMPORTANT QUALITIES

- Analytical skills
- Communication skills
- Critical-thinking skills
- Interpersonal skills
- Physical stamina

WHAT THEY DO

Work with agricultural and food scientists in food, fiber, and animal research, production, and processing. Assist with animal breeding and nutrition. Conduct tests and experiments to improve crop yields or increase the resistance of plants and animals to disease and insects.

Inspect, repair, and overhaul buses and trucks, or maintain and repair any type of diesel engine. Consult with customers, read work orders, and determine work required. Perform basic care and maintenance, including oil changes and tire rotations, read and interpret diagnostic test results to identify problems, and repair or replace worn parts.

EMPLOYMENT OPPORTUNITIES

MEDIAN HOURLY WAGES \$16.06 TO \$22.53
Employment of agricultural and food technicians is projected to grow 6 percent from 2016 to 2026, about as fast as the average for all occupations. Demand will continue for research in a large variety of areas.

MEDIAN HOURLY WAGES \$17.04 TO \$25.49
Employment of diesel mechanics is projected to grow 9 percent from 2016 to 2026, about as fast as the average for all occupations. As more freight is hauled cross-country, more diesel mechanics will

USED & DISTRIBUTED ACROSS THE STATE

- NEWSLETTERS
- SOCIAL MEDIA
- CAREER ADVISORY GROUPS
- 1:1 CAREER ADVISORY SESSIONS
- CAREER EXPLORATION EVENTS
- WEBSITES
- CLASSROOM PRESENTATIONS
- POSTERS- HALLWAYS & CLASSROOMS
- BULLETIN BOARDS
- CHAMBERS
- EMPLOYERS
- COMPLIMENTARY TO CURRICULUMS (I.E. REALITY CHECK, MCIS)
- CTE /CAREER PATHWAY
- OUTREACH AND RECRUITMENT
- SHARED WITH PARTNERS (I.E. ABE)

\$15.69

\$17.40

These jobs are in demand in the state of Minnesota and these are Minnesota median wages. Data collected from Department of Employment and Economic Development.

WHY CHOOSE A CAREER IN AG?

The Agriculture and Food Industry is the 2nd largest employer in Minnesota which includes 367,000 jobs that are directly and indirectly related to the industry.

Provided for you by the Minnesota Rural Career Counseling Coordinators (RC3 Grant)



A proud partner of the americanjobcenter® network

CareerForce
It's your state of...

View videos of career paths in the agriculture and food industry
www.careeronestop.org/Videos/CareerVideos/career-videos.as

Central Minnesota Jobs and Training Services, Inc. and Career Solutions are Opportunity Employer and Program Providers. Upon request the information in this document can be made available in alternative formats. Contact Angie Dahle at angie.dahle@CSJobs.org or Leslie Wojtowicz at lwojtwicz@cmjts.org or at 1-800-284-

CAREER PATHS IN BUSINESS SERVICES IN SW/SC MN

1-2 YEAR COLLEGE DEGREE

Bookkeeping, Accounting, & Auditing Clerk
\$17.45

Business Operation Specialist
\$24.60

Loan Officer
\$34.68

Sales Representative
\$28.55

Human Resources Specialist
\$17.62

4-YEAR OR MORE COLLEGE DEGREE AND/OR EQUIVALENT EXPERIENCE

Accountant & Auditor
\$28.74

Financial Manager
\$48.10

Financial Advisor
\$37.55

Training & Development Specialist
\$26.62

Human Resources Manager
\$40.51

Marketing Manager
\$48.42

Sales Manager
\$43.91

General & Operations Manager
\$33.94

RURAL CAREER COUNSELING COORDINATORS (RC3)

REACTIONS

CUALIDADES IMPORTANTES

- Visión cercana y lejana
- Coordinación manos-ojos-pies
- Velocidad de reacción
- Percepción de la profundidad
- Aptitudes de resolución de problemas

- Aptitudes de servicio al cliente
- Detallismo
- Destreza
- Aptitudes mecánicas
- Capacidades organizativas
- Fortaleza física
- Aptitudes de resolución de problemas

QUÉ HACEN



La mayoría de los conductores de combinaciones tractor-remolque son conductores de larga distancia. Existen oportunidades para conductores de camiones pesados y tractor-remolque en la construcción de carreteras, los departamentos de carreteras locales y estatales, excavaciones, canteras y agricultura.

Inspeccionan, mantienen y reparan automóviles y camionetas. Utilizan con frecuencia computadoras y escáneres de diagnóstico para probar piezas y sistemas a fin de identificar problemas, realizar mantenimiento básico como cambios de aceite y rotación de neumáticos, y reparar o reemplazar piezas gastadas. Explican a los clientes los problemas y reparaciones automotrices.

OPORTUNIDADES DE EMPLEO

PROMEDIO POR HORA SALARIOS \$16.72 \$23.35^A

Está previsto que el empleo de los conductores de camiones pesados y tractor-remolque crezca 6 por ciento entre 2016 y 2026, casi tan rápido como el promedio de todas las ocupaciones. A medida que crece la demanda de mercancías, se necesitarán más conductores de camiones pesados y tractor-remolque.

PROMEDIO POR HORA SALARIOS \$15.40 \$23.81^A

Está previsto que el empleo de los técnicos y mecánicos de servicio automotriz crezca 6 por ciento entre 2016 y 2026, casi tan rápido como el promedio de todas las ocupaciones. Se necesitarán más técnicos de servicio automotriz principiantes para realizar mantenimiento y reparaciones básicas a medida que la

4-YEAR COLLEGE DEGREE

Elementary School Teacher
\$30.24

Secondary School Teacher
\$30.12

Special Education Teacher – Kindergarten & Elementary
\$29.73

ASSOCIATE'S DEGREE OR CERTIFICATE

Licensed Practical and Licensed Vocational Nurse
\$22.93

Secretary and Administrative Assistant, except Legal, Medical, and Executive
\$19.72

HIGH SCHOOL DIPLOMA OR GED AND/OR EXPERIENCE/ ON-THE-JOB TRAINING

Bus Driver, School or Special Client
\$17.39

Cook – Institution and Cafeteria
\$15.99

Welder, Cutter, Solderer, and Brazier
\$21.65

Paraprofessional / Teaching Assistant
\$15.35

WHY CHOOSE A CAREER IN EDUCATION?

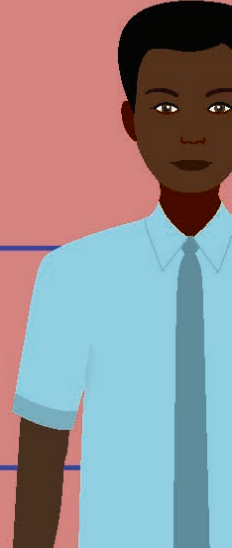
Choosing education as a career allows you to make a lasting difference in students' lives.

These jobs are in demand in the state of Minnesota and these are Minnesota median wages. Data collected from Department of

In Demand Education Careers

PARAPROFESSIONAL/ TEACHER ASSISTANT

SCHOOL TEACHERS



EDUCATION

In Minnesota, most individuals are required to have a High School Diploma/GED and passed a ParaPro exam or have completed at least two years of study (60 semester credits) at an institution of higher education.

People starting in this career usually have a Bachelor's degree and a teaching license. There are many teacher education programs that can prepare you to teach specific academic subject areas at various education levels.

IMPORTANT QUALITIES

- Active Listening
- Speaking
- Interpersonal Skills
- Patience
- Resourcefulness
- Instructing

- Instructing
- Communication Skills
- Critical Thinking
- Learning Strategies
- Problem Solving Skills
- Decision Making Skills
- Social Perceptiveness
- Coordination



RURAL CAREER COUNSELING COORDINATORS (RC3)

IMPACT

IMPORTANT QUALITIES

- Near and far vision
- Hand-eye-foot coordination
- Quick reaction time
- Depth perception
- Problem solving skills

- Customer-service skills
- Detail oriented
- Dexterity
- Mechanical skills
- Organizational skills
- Physical strength
- Troubleshooting skills

WHAT THEY DO

Most tractor-trailer drivers are long haul drivers. There are opportunities for Heavy Tractor-Trailer Truck Drivers in road construction, you local and state highway departments, excavating, quarries, and agriculture.

Inspect, maintain, and repair cars and light trucks. They use computers and scanning tools frequently to test parts and systems to identify problems, perform basic maintenance, including oil changes and tire rotations, and repair or replace worn parts. Explains automotive problems and repairs to clients.

EMPLOYMENT OPPORTUNITIES

MEDIAN HOURLY WAGES \$16.72 TO \$23.35

Employment of heavy and tractor-trailer truck drivers is projected to grow 6 percent from 2016 to 2026, about as fast as the average for all occupations. As the demand for goods increases, more truck drivers will be needed to keep supply chains moving.

MEDIAN HOURLY WAGES \$15.40 TO \$23.81

Employment of automotive service technicians and mechanic is projected to grow 6 percent from 2016 to 2026, about as fast as the average for all occupations. More entry-level automotive service technicians will be needed to perform basic maintenance and repairs as the number of vehicles in use continues to rise.

IMPORTANT QUALITIES

- Critical-thinking skills
- Communication skills
- Compassion
- Detail oriented
- Emotional stability
- Organizational skills
- Physical stamina

- Ability to use technology
- Detail oriented
- Good dexterity
- Physical stamina

WHAT THEY DO

Patient care, maintain medical records, educate patients and the public about various health conditions, and provide advice and emotional support.

Medical laboratory technologists and medical laboratory technicians collect samples and perform tests to analyze body fluids, tissue, and other substances.

EMPLOYMENT OPPORTUNITIES

MEDIAN HOURLY WAGES \$28.80 TO \$43.87

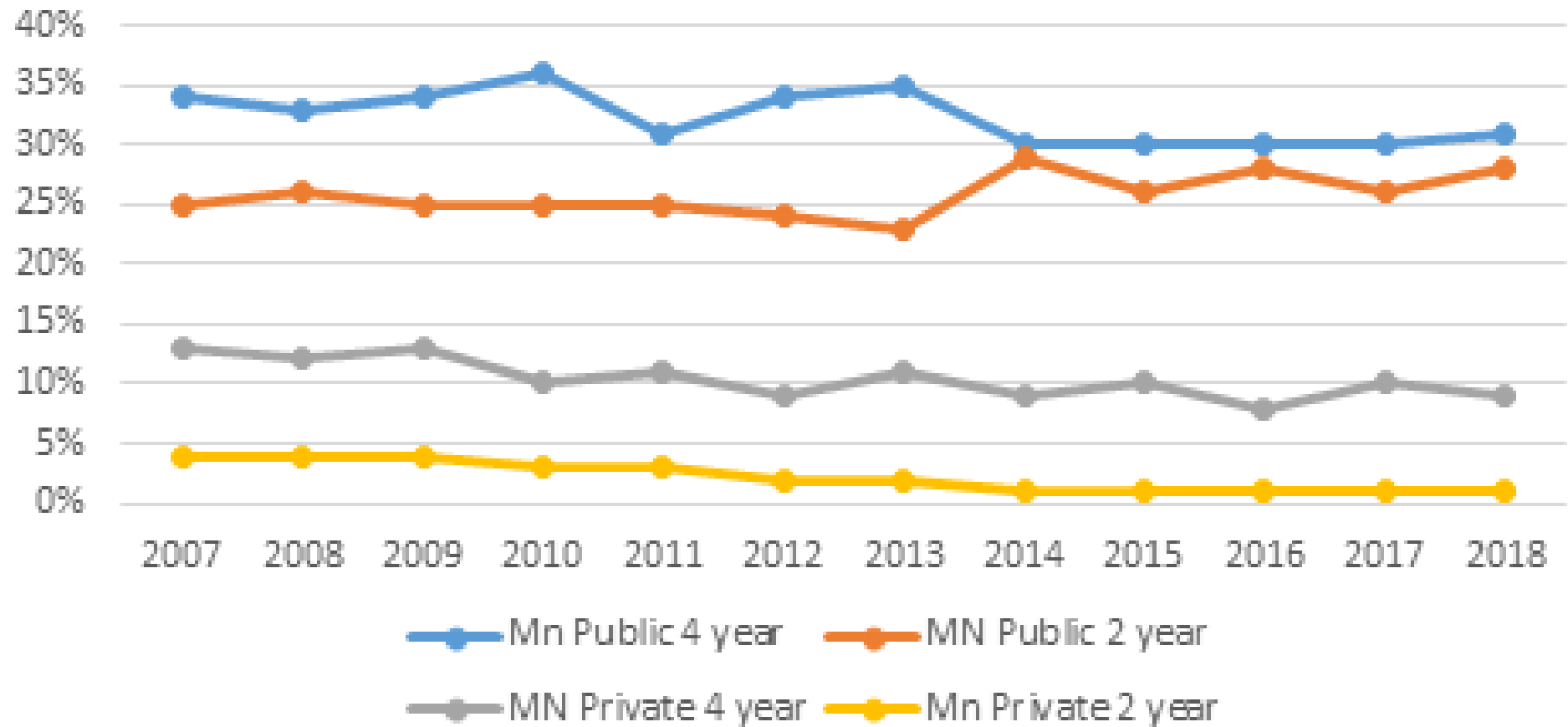
Registered nurses are the largest healthcare occupation with over 20,000 openings expected in Minnesota over the next 10 years.

MEDIAN HOURLY WAGES \$18.66 TO \$25.01

Statewide Demand is Above Average with 1,200 opening expected in the next 10 years.

These jobs are in demand in Southwest and South Central Minnesota and these are SW/SC Minnesota Median wages. Data collected from Department of Employment and Economic Development.

WIOA Region #5 Students Enrolling in College after HS Graduation



RURAL CAREER COUNSELING COORDINATORS (RC3)

NEXT STEPS

Source: QCEW Job Vacancy Survey

Agriculture comprised more than 20 percent of total jobs added in the region over the past decade. Nearly half of the agriculture vacancies are at employers in Southern Minnesota.

Well over one-third of this agriculture employment is located in Southern Minnesota. According to the Quarterly Census of Employment and Wages (QCEW) data, Southern Minnesota provides about 15 percent of total jobs in the state, but over 39 percent of the state's jobs in agriculture, forestry, fishing and hunting.

The information technology (IT) field includes a number of occupations, ranging from computer programmers to database administrators to computer support specialists to web developers. The 23-county Southwest Minnesota region was home to around 2,000 workers in information technology occupations. The median hourly wage for computer and mathematical occupations was \$28.04, which was nearly \$9.00 per hour higher than the total of all occupations. About three-quarters of the IT jobs

**RURAL CAREER COUNSELING
COORDINATORS (RC3)**

QUESTIONS?

NORTHERN MINNESOTA- DAN WENNER

**CENTRAL MINNESOTA- LESLIE WOJTOWICZ
ANGIE DAHLE**

**SOUTHCENTRAL MINNESOTA- SARA CARRIGAN
HEATHER GLEASON**

SOUTHWEST MINNESOTA- ERIANN FARIS

**SOUTHEAST MINNESOTA- SUSAN BOEHM
ANGELA BIRRITTELLA**

**RURAL CAREER COUNSELING
COORDINATORS (RC3)**

THANK YOU