



**MINNESOTA ASSOCIATION
OF WORKFORCE BOARDS**

**MAWB-CareerForce
Systems-VRS-SSB
Meeting
*January 21, 2021***

The background is a solid dark blue. On the left and right sides, there are several overlapping, slanted rectangular shapes in various shades of green and cyan, creating a sense of depth and movement. The word "Introductions" is centered in the middle of the frame in a white, bold, sans-serif font.

Introductions

Check-In Activity

You'll see a question on the screen. Type your answer in the Chat and send!



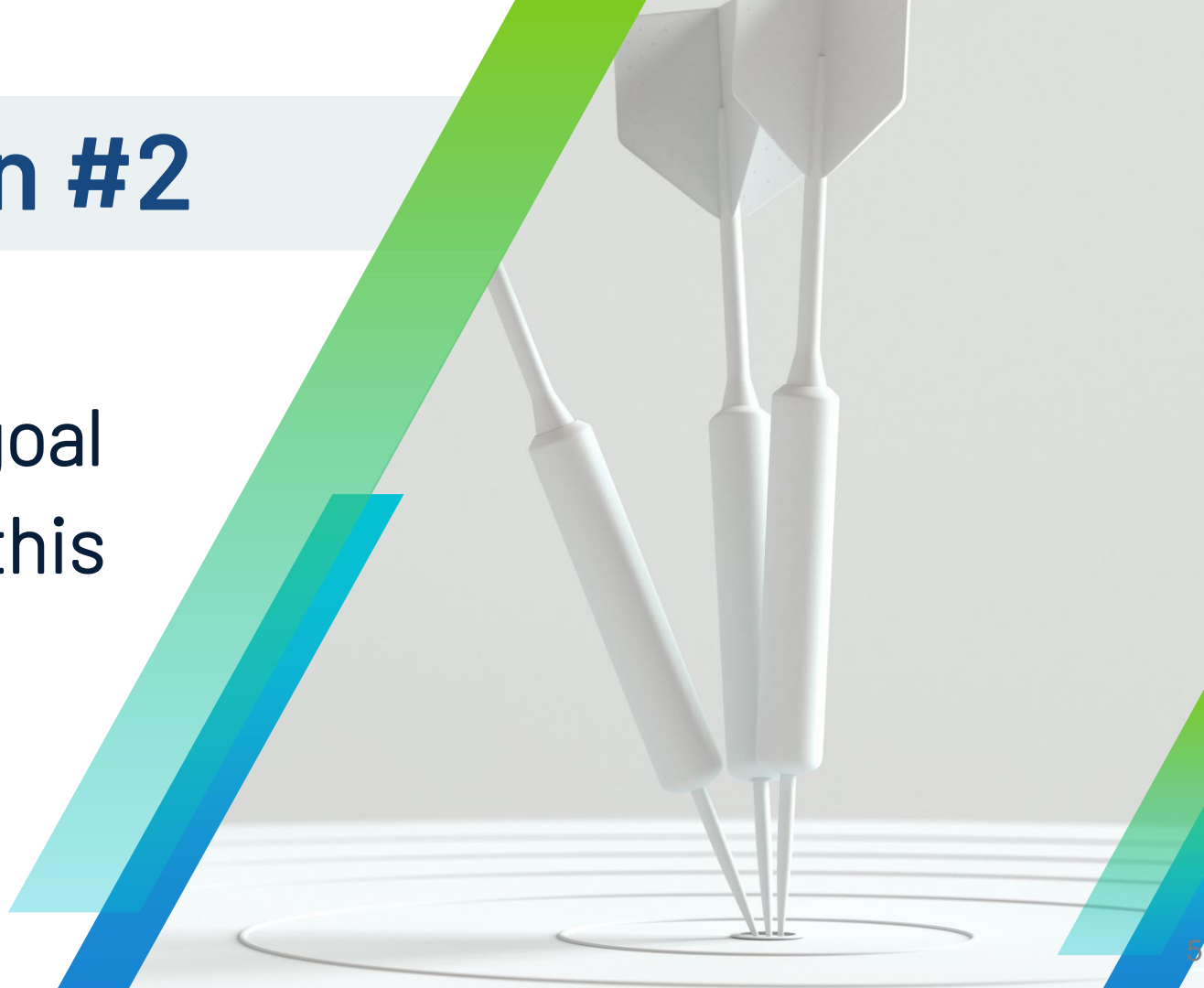
Question #1

What three things do you do the most in a typical day on your job?



Question #2

What is one goal you have for this meeting?



Question #3

What is something you appreciate about your work with MAWB, CareerForce, VRS, or SSB?




Mission & Purpose

- **Mission:** To strengthen collaborative relationships between these entities in order to more efficiently prevent and/or resolve issues that arise during service delivery and joint future initiatives.
- **Purpose:** To share knowledge and best practices; identify and eliminate discrepancies in service delivery around the state; and develop a network of peers to use as a resource to answer questions about services and programs that pertain to all parties.

Goals

- Hear presentations from speakers about serving people with disabilities throughout the workforce system
- Hear a presentation about the new standardized workshops
- Share best practices from local staff on service delivery & outreach
- Focus on inclusion and equity
- Discuss and resolve questions around rules, regulations, and reporting
- Discuss how each group is organized in terms of geographic regions
- Support engagement with the CareerForce platform
- Support engagement with the public: communicate that although physical buildings may be closed, CareerForce is open
- Utilize strengthened connections to support potential re-opening of physical locations in 2021
- Hold presentations/conversations about referring to one another
- Gain a better understanding of the day-to-day work of each organizational group represented at the meeting.



Partner Updates

2:00 – 2:40 PM

Minnesota Association of Workforce Boards (MAWB)

2:00 – 2:10 PM

Tammy Biery, Executive Director, Career Solutions

- National Emergency Grants for Dislocated Workers and Opioids
- Other Workforce Development Initiatives

CareerForce Systems

2:10 – 2:20 PM

Mike Lang, Director of Employment Services

- What's New with CareerForce? Explore Careers Series
- 1:1 Virtual Services – What does this include?

Vocational Rehabilitation Services (VRS)

2:20 – 2:30 PM

Dee Torgerson, Director

■ Pre-ETS

■ Opened Categories

VRS Priority for Service Categories

- **Category 1:** Person has three or more serious functional limitations.
- **Category 2:** Person has two serious functional limitations.
- **Category 3:** Person has one serious functional limitation.
- **Category 4:** Person has no substantial functional limitation or does not need multiple services over an extended period.

- When resources are insufficient to serve qualified new applicants, a priority category may be closed.
- New applicants who qualify are placed on an indefinite statewide waiting list.
- Conserves resources so obligations to persons who are already being served may continue to be met.

Order of Selection History

1994: Order of Selection established

1998: Category 4 closed

2002-2005: Categories 2 and 3 closed

January 2004-July 2005: Category 1 closed

2011: Categories 2 and 3 closed

2014: Waiting list cleared; Categories 2, 3 and 4 remain closed

2020: Waiting list cleared; Categories 2 and 3 opened; Category 4 remains closed

Pre-Employment Transition Services (Pre-ETS) 5 Required Services

- Job Exploration Counseling
- Work-Based Learning Experiences
- Postsecondary Education Counseling
- Workplace Readiness Training
- Instruction in Self-Advocacy

[Click here](#) for definitions



Pre-ETS Availability



- Are provided in **collaboration** with secondary schools
- Must be **made available statewide** to all students with disabilities, regardless of whether the student has applied or been determined eligible for VR services
- **Any student** with a disability who is age 14-21 can receive Pre-ETS

Services For Eligible and Potentially Eligible Students

- Students Eligible for VR:
 - Have applied for and been determined eligible for traditional VR services
 - VRS/SSB counselors include needed Pre-ETS as part of the Employment Plan
- Students Potentially Eligible for VR (NEW):
 - Students with documented disabilities, in an education program, ages 14 through 21
 - VRS Pre-ETS representatives and SSB Pre-ETS coordinator or counselors coordinate needed Pre-ETS (no Employment Plan)

State Services for the Blind (SSB)

2:30 – 2:40 PM

Natasha Jerde, Director

■ SSB Does What?!

An Overview of the Services Available to
Blind, Visually Impaired, and DeafBlind
Minnesotans

State Services for the Blind: Communication Center

- **Accessibility Consultation and Review**
 - Partnership with the State of Minnesota to ensure systems, programs, processes, and documents are accessible and useable for those who are blind, visually impaired, or DeafBlind
- **Audio Services**
 - Audio transcription of books and materials
 - Partnership with the Minnesota Braille and Talking Book Library + National Library Service
- **Braille**
 - Transcription and tactile graphics for individuals, agencies, and businesses
 - K-12 Interagency Agreement
- **Development Office**
 - Donations help fund our operations, averaging \$200,000-\$300,000/year
- **Radio Talking Book**
 - 24-7 broadcasting via online stream, Alexa skill, and Android/iOs apps

State Services for the Blind: Program Services

- Business Enterprises Program
 - Blind entrepreneurs owning and operating self-sustaining vending businesses
- Senior Services
 - Independent living services to seniors with vision loss
 - Aging Eyes Initiative: a community partnership
- Workforce Development/Vocational Rehabilitation (VR)
 - The “other” VR program that helps blind, visually impaired, and DeafBlind individuals 14 years of age and older achieve competitive integrated employment
 - Provides adjustment to blindness training, education, pre-employment transition services, assistive and adaptive technology, and employment services
 - No waiting list



CareerForce Standardized Workshop Pilot

2:40 – 2:55 PM

■ Mike Lang and Art Larsen

Upcoming Meetings

- Thursday, April 15th at 1:30 PM
- Thursday, July 15th at 1:30 PM
- Thursday, October 21st at 1:30 PM