

# South Central Adult Career Pathways Partnership

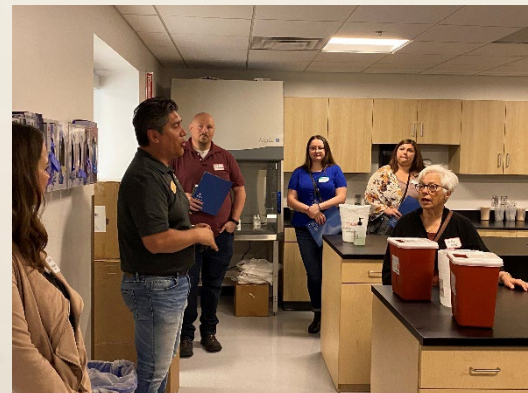
- Adult Basic Education: Area Adult Learning Cooperative, Faribault County ABE, & Mankato ABE
- MN DEED: Job Services
- MRCI: Blue Earth County Employment Services
- Minnesota Valley Action Council
- South Central College
- South Central WorkForce Council
- Mankato Clinic
- Mayo Clinic Health Systems
- Jones Metal
- Minnesota Department of Transportation
- Vocational Rehabilitation Services
- Lakeview Methodist
- South Central Service Cooperative
- Minnesota Council of Churches
- Lifework Planning Center
- Mankato Area Public Schools
- Motivation Education & Training

# South Central Adult Career Pathways Partnership

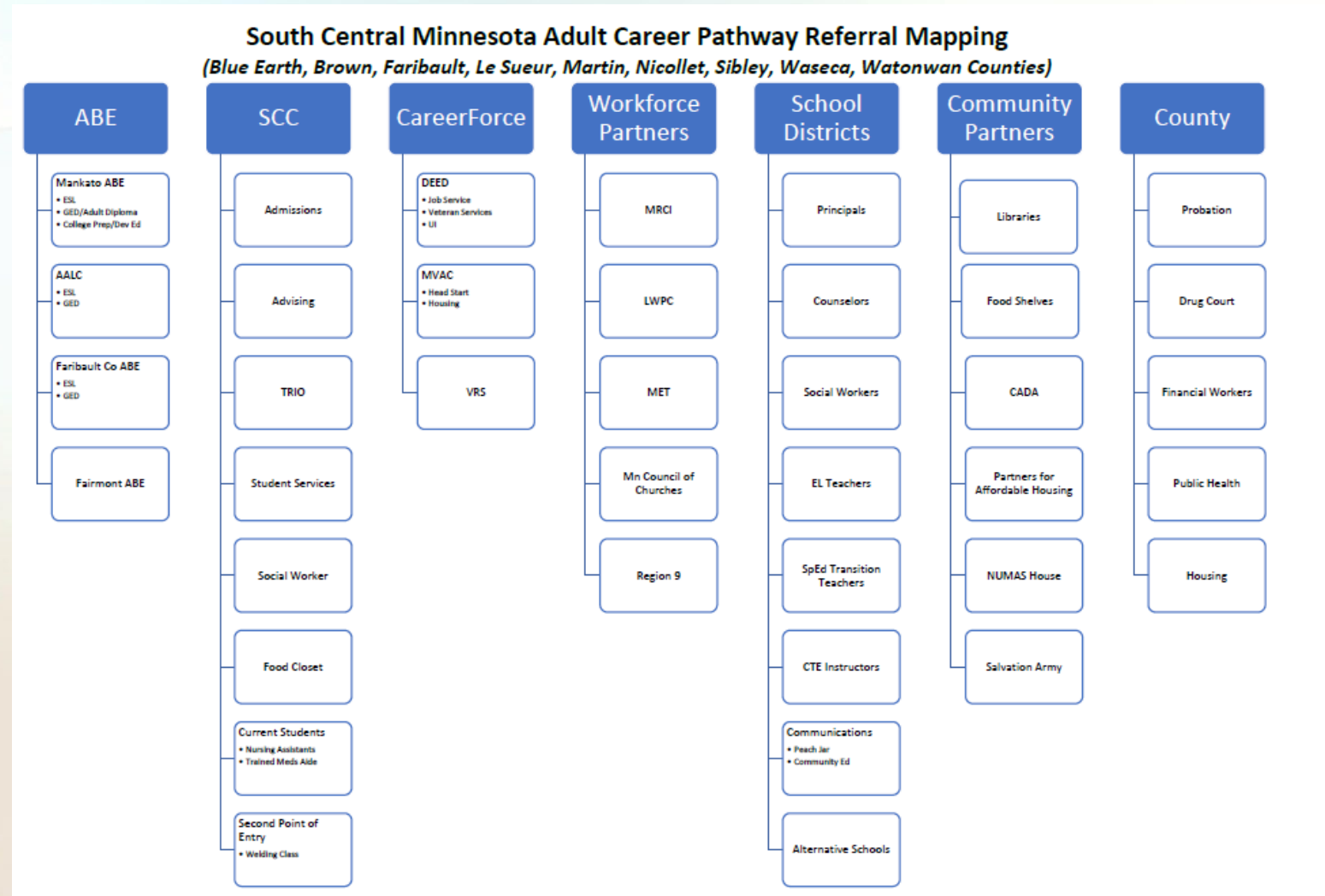
- Promote working together across agencies to provide wrap around services to support job seekers to overcome barriers and achieve their career goals
- Improves services to job seekers by reducing duplication of services and collaborating between agencies regarding paperwork, referral and services
- Build a pipeline of skilled workers in demand occupations
- Focus on populations experiencing employment disparities
- Development of multiple starting points to participate in Career Pathway programming based on the participant needs

# Adult Career Pathway Networking Event

- Launched in 2018
- Strengthen collaboration and communication between agencies
- Maximizing services and resources for job seekers
- Pathways to Prosperity Program overview, participant panel, breakout sessions from partners and networking lunch
- Industry partners interested in modeling the event with an employer focus



- Referral Map: adopted from Mayo Clinic partners with the Bridges to Healthcare Program



# Adult Career Pathways Partnership

- Reverse referrals
- Success Story Videos in partnership with Southwest Minnesota Private Industry Council

# Questions?



Sara Carrigan, LSW, GCDF  
Assistant Director  
507-345-2402  
[sara@workforcecouncil.org](mailto:sara@workforcecouncil.org)  
[www.workforcecouncil.org](http://www.workforcecouncil.org)

Heather Gleason, LSW, GCDF  
Executive Director  
507-345-2418  
[hgleason@workforcecouncil.org](mailto:hgleason@workforcecouncil.org)  
[www.workforcecouncil.org](http://www.workforcecouncil.org)