



## **GWDB 2023 Planning**

# GDWB Meeting Schedule

## Full Board Meetings in 2023:

- **Thursday, March 30:** 9:00 – 10:00 a.m. Board Orientation; 10:00 a.m. – 12:00 p.m. Quarterly Business Meeting
- **Tuesday, June 20** – Minnesota Heritage Center, 10 - 2
- **Workforce Summit** – Full day, Location TBD, GWDB Meeting the following day
- **Wednesday, November 15:** GWDB-MAWB Joint Winter Meeting; Time and Location TBD

# WIOA State Plan Proposed Timeline

May 11: Convene Program Administrators to introduce vision and proposed timeline

June: Convene Executive Committee to propose the One Minnesota Vision & Strategy for Workforce be shared at the June GWDB meeting and incorporated into 2024-2027 State Plan

August: Convene Program Administrators to finalize timeline, roles, and responsibilities

November 8: Due date for first drafts of each of the state plan sections

By the end of December 2023: State, regional and local plan submitted to GWDB Executive Committee and Agency Senior Leaders for review (and GWDB special committee?)

January 3-10, 2024: Special Meeting of GWDB Executive Committee to approve draft plan

January 10-15, 2024: Special Meeting of GWDB to approve draft Plan

January 15, 2024: Plan submitted for Governor's Review and posted for Public Comment

January 15-February 15, 2024: Staff review public comments and feedback from Governor's Office when available

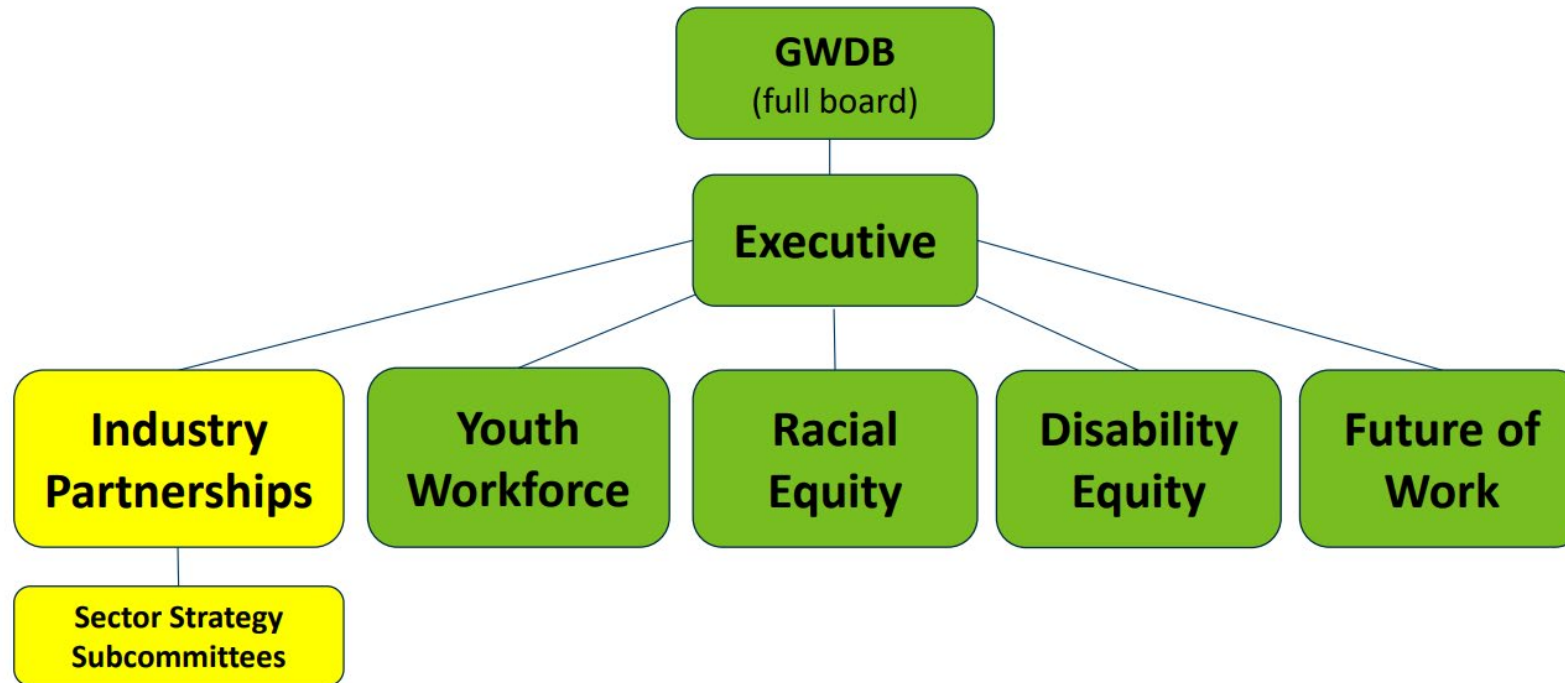
February 17-28, 2024: Staff incorporate any final changes needed from Governor's Office or Public Comment

March 15, 2024: WIOA 2024-2027 State Plan submitted to US DOL

# WIOA Regional and Local Plans Timeline

- August – DEED Guidance issued for State, Regional and Local Plans
- September 21 – Planning meeting after Workforce Summit (NGA/NAWB?)
- November 10 – Share first draft of state plans with local and regional planning staff
- December 1 – First draft of all Regional and Local Plans due
- Dec 1 – Dec 22: DEED staff review local and regional plans, provide updates or approval
- By the end of December 2023: State, regional and local plans submitted to GWDB Executive Committee and Agency Senior Leaders for review.

# Committee Structure



*Proposed* Committee Structure

# GWDB Staff Contacts

**Katie McClelland**  
**Director of the GWDB**  
[Katie.McClelland@state.mn.us](mailto:Katie.McClelland@state.mn.us)

**Kay Kammen**  
**GWDB Sr. Policy Analyst**  
[Kay.Kammen@state.mn.us](mailto:Kay.Kammen@state.mn.us)  
*(Primary WIOA State Plan contact)*

**Sonji Davis**  
**Workforce Policy  
Coordinator**  
[Sonji.Davis@state.mn.us](mailto:Sonji.Davis@state.mn.us)  
*(Primary Annual Plan &  
Local/Regional Plan Contact)*