



# Employment and Economic Development

Data Validation

Shannon Rolf

ETP Monitoring Supervisor

[shannon.rolf@state.mn.us](mailto:shannon.rolf@state.mn.us)

February 28, 2024

# Agenda

WHAT IS DATA VALIDATION?



STATUTORY AND REGULATION/POLICY CITATIONS



DEED's DATA VALIDATION POLICY



NEXT STEPS - PY23 DATA VALIDATION



Q & A

# DEED's Data Validation Work Group

- Amy Carlson
- Vue Her
- Art Larson
- Ahmed Mohidin
- Paramasivan Murugesan
- Shannon Rolf
- Cory Schmid
- John Vo

# What is Data Validation?

# What is Data Validation?

---

Data validation is a series of internal controls or quality assurance techniques established to verify the accuracy, validity, and reliability of data.



# Purpose of Data Validation



Verifies performance data reported by DEED and the Local Workforce Development Areas (LWDAs) are valid, accurate, and reliable.



Identifies data issues that may cause inaccuracies in reporting.



Outlines source documentation required for common data elements.



Improves performance accountability.

# Data Validation Requirement

Per the Workforce Innovation and Opportunity Act (WIOA), States are required to establish data validation policy and procedures, consistent with guidelines issued by the U.S. Department of Labor (DOL) and U.S. Department of Education, to ensure the program information submitted to DOL is valid, accurate, and reliable.



# Statutory and Regulation/Policy Citations



# Regulatory & Policy Citations

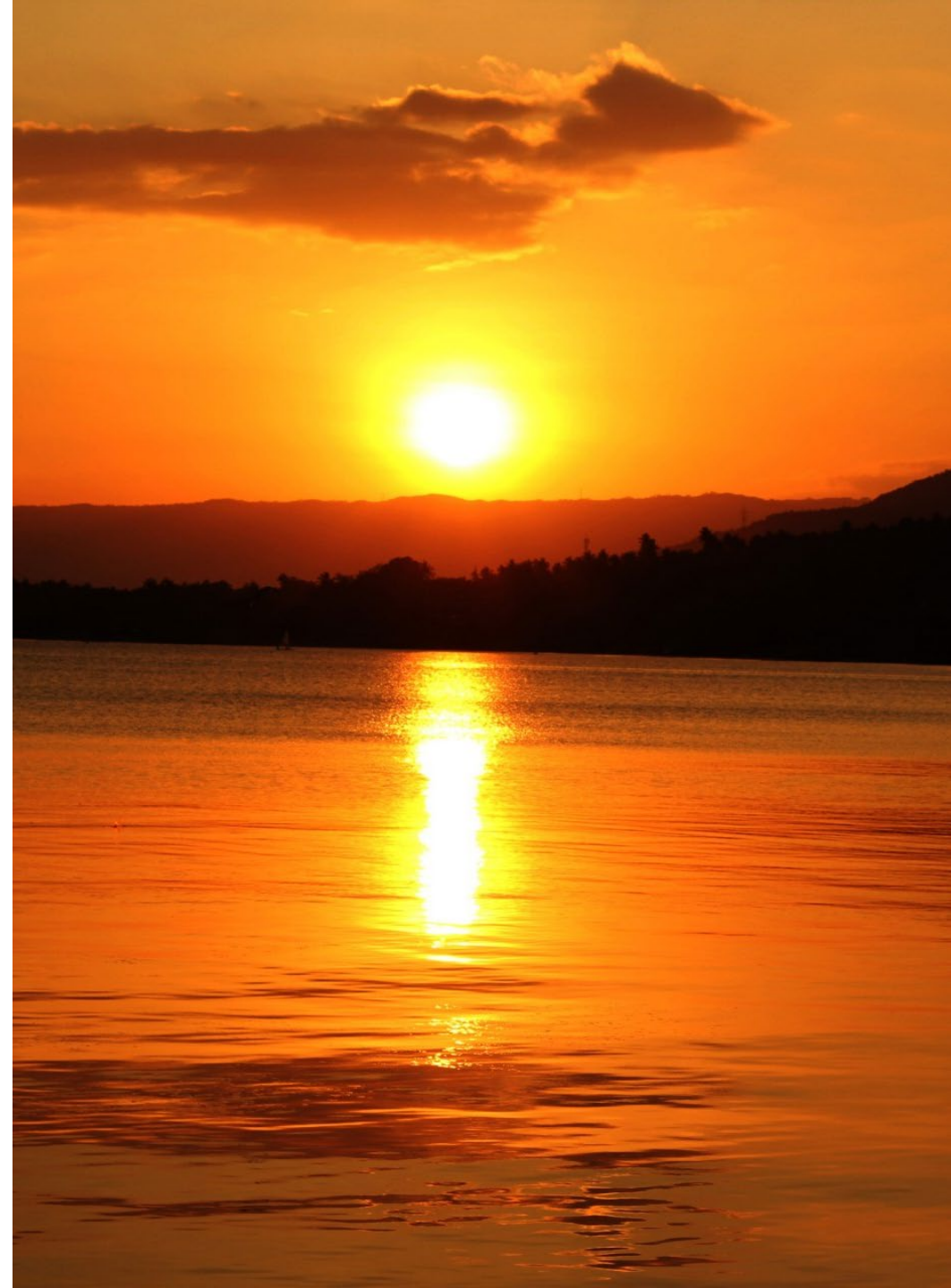
## Data validation for performance accountability required under WIOA section 116(d)(5)

- [TEGL 07-18](#): Guidance for Validating Jointly Required Performance Data Submitted under the Workforce Innovation and Opportunity Act (WIOA), issued December 19, 2018
- [TEGL 23-19](#): Guidance for Validating Required Performance Data Submitted by Grant Recipients of U.S. Department of Labor (DOL) Workforce Programs, issued June 18, 2020 (rescinded).
- [TEGL 23-19 Change 1](#): Guidance on developing procedures for ensuring the data submitted for performance reporting are valid and reliable, issued October 25, 2022.
- [TEGL 23-19 Change 2](#): Clarification of program instructions, Attachment I and revised PDF and Excel versions of Attachment II to TEGL 23-19, Change 1, issued May 12, 2023.

# DEED's Data Validation Policy

# Data Validation Policy Includes:

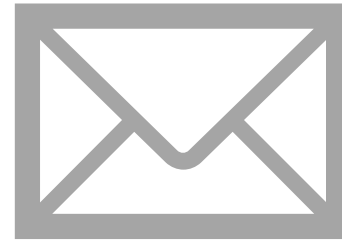
- The **purpose of data validation**
- **Description of the data validation responsibilities** of DEED and the Local Workforce Development Areas (LWDAs)
- Details on the **data validation procedures** and timeframes
- **Definitions** to further clarify data validation processes and methodology



# Data Validation Policy Open for Public Comment



Visit [DEED's Policy and Guidance webpage](#) to review the policy.



Comments may be emailed to [etpmonitoring.deed@state.mn.us](mailto:etpmonitoring.deed@state.mn.us) by **Friday, March 29, 2024.**

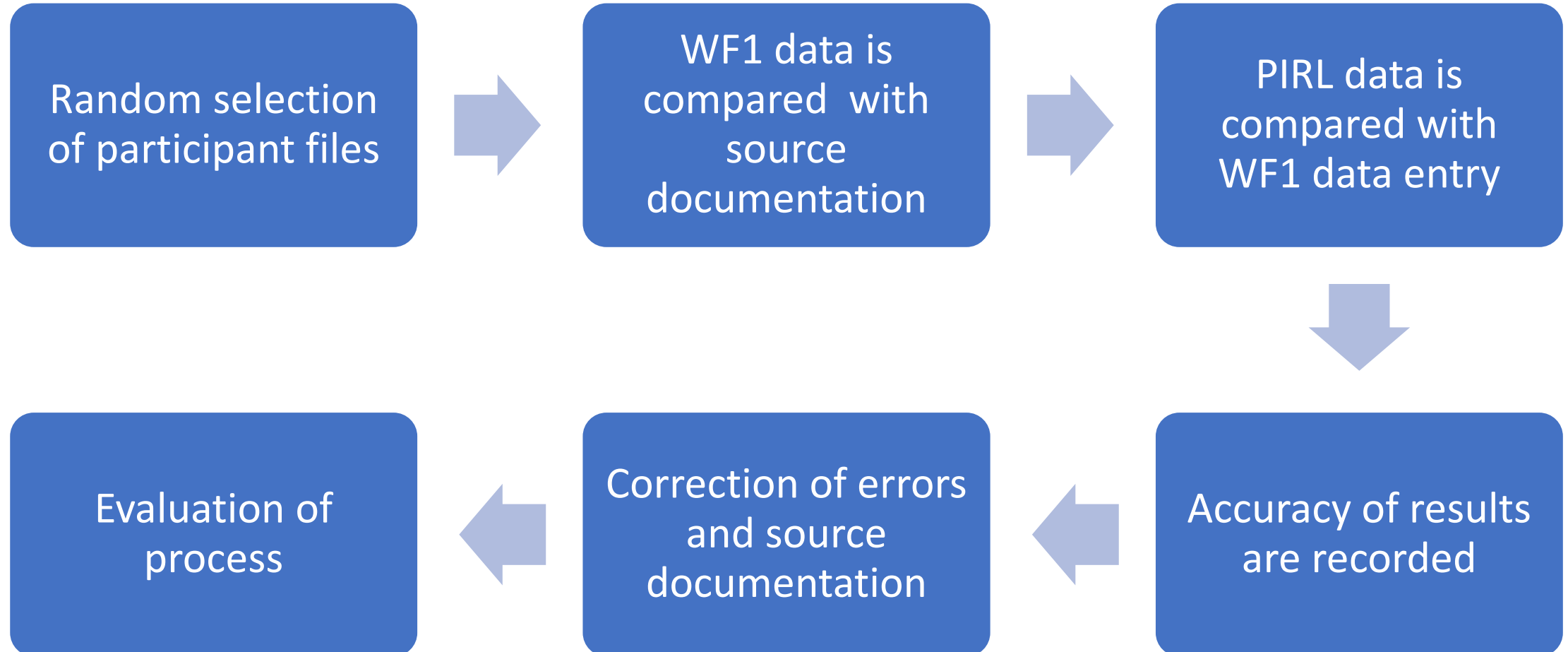
# Next Steps - PY23 Data Validation

**DON'T  
PANIC**



# Minnesota's Data Validation Process

---





## Who will participate in PY23 data validation?

A few Local Workforce Development Areas (LWDAs) will be invited to participate in PY23 data validation.

To maximize the number of files validated, LWDAs already using WF1 EDS (Electronic Document Storage) to maintain participant source documentation will be selected.





## Which participant files will be validated?

- WIOA Title I (Adult, Dislocated Worker, & Youth)
- WIOA Title III Wagner-Peyser Employment Services (including Migrant and Seasonal Farmworker services)
- Trade Adjustment Assistance (TAA)
- National Dislocated Worker Grants (DWG)

How many participant files  
will be validated in PY23?

About 230 Total

(between 50-60 files per  
participating local partner)



# Who will conduct the data validation?



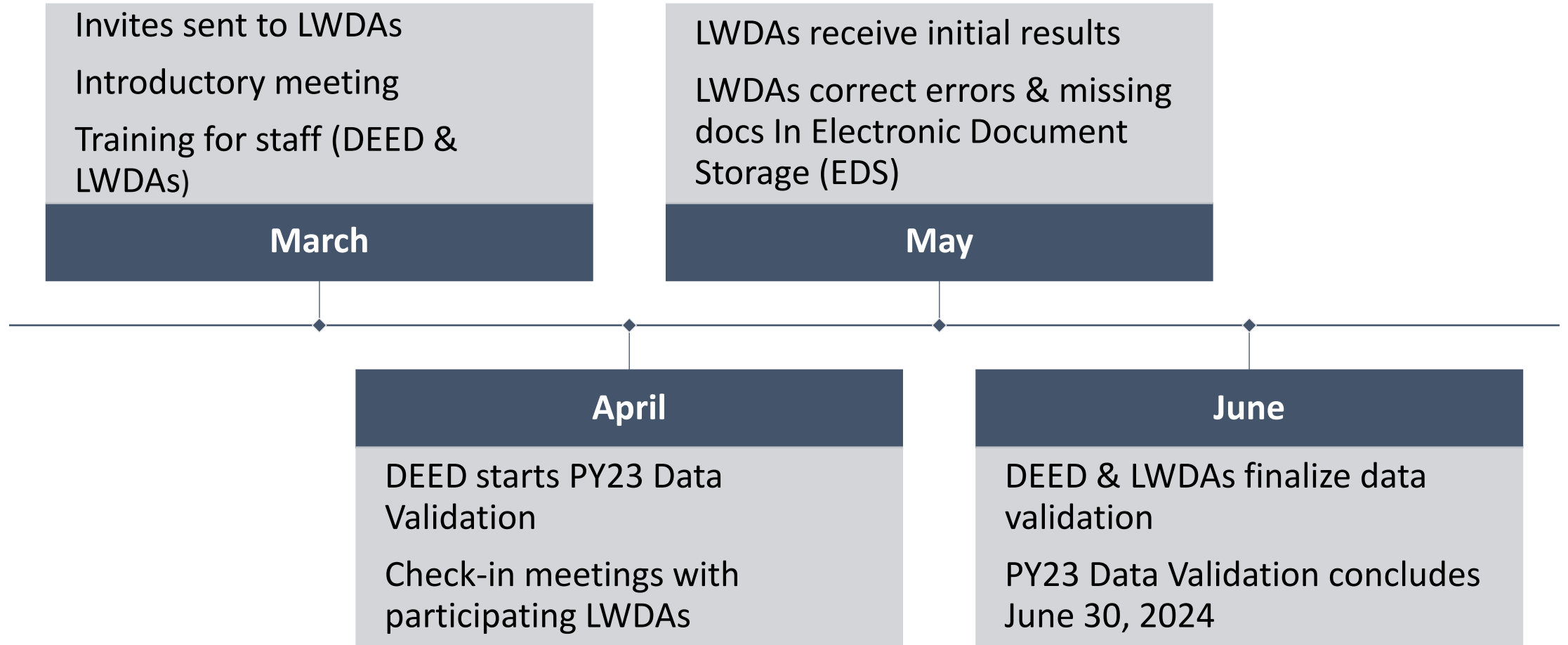
Data Validators are Department of Employment and Economic Development (DEED) staff who are independent of the data collection process. CareerForce and local area staff will not validate their own data.

# What will the responsibilities be of each LWDA?

Each participating local area will work with DEED validators to ensure participant source documentation is uploaded into WF1 Electronic Document Storage (EDS) for data validation and will work as needed with DEED to correct identified data errors by June 30, 2024.



# PY23 Data Validation Timeline (March – June 30, 2024)



# Coming Soon...

## Electronic Document Storage (EDS) Policy



Electronic Document Storage (EDS) Policy will be released soon for public comment.



**Federal grant recipients** will be required to upload and maintain participant source documentation in WF1 EDS as of **July 1, 2024** for all active participants as well as new enrollees for Program Year (PY) 24 and those years following.



**State grant recipients** will be required to upload and maintain participant source documentation in WF1 EDS as of **July 1, 2025** for all active participants as well as new enrollees for State Fiscal Year (SFY) 26 and those years following.

“Alone we can do so little,  
together we can do so  
much.”

---

- Helen Keller

